



TNT CRANE & RIGGING EQUIPMENT FOR SALE

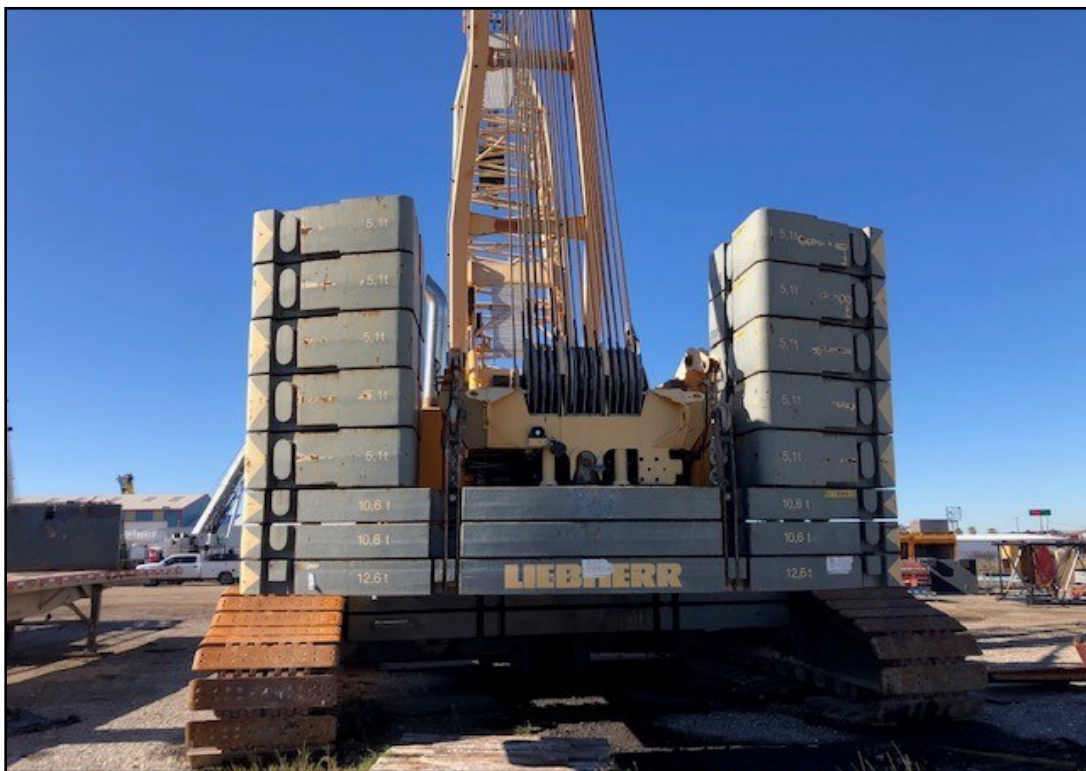
Liebherr LR-1280 300-Ton Lattice Boom Crawler Crane

Year	2005
Main Boom	58.1m of Main Boom (7 sections)
Jib	59m of Luffing Jib (7 sections)
Counterweight	Upper - 188,500 lbs. One - 12.6t Basic Ballast Plate Two - 10.6t Ballast Plates Ten - 5.1t Ballast Plates
Carbody Weights	79,400 lbs.
Blocks	400te 5 Sheave Block 160T; Pit Ball
Engine	Liebherr D9408Ti
Hours	16,003 (as of February 2020)



CONTACT— Kevin Lawson at (903) 220-8900 or klawson@tntcrane.com

Liebherr LR-1280 300-Ton Lattice Boom Crawler Crane



CONTACT— Kevin Lawson at (903) 220-8900 or klawson@tntrane.com